




Satellite Class



In Satellite Class we are keen for pupils to continue their learning at home. Below are some website platforms that can be used to support your child's learning, for those needing usernames and passwords you will find these in their home contact books (alternatively email Mrs Hart at the address below).

Try to complete at least 10 minutes on each site daily.

Websites for Interactive learning;

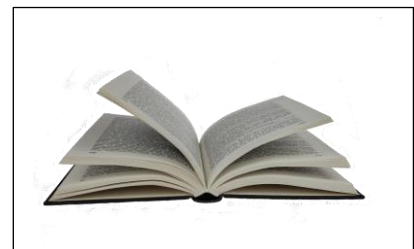
Times table practice		https://ttrackstars.com/	Remember to add the school postcode ME16 8NL
Bug Club reading books and phonics Science bug		https://www.activelearnprimary.co.uk/	Remember to add the school code Xhfh
Cross curricular games and activities		https://www.purplemash.com/login/	

In addition to these online activities' pupils must complete the following learning activities this week;

English

Look at the slide below. Think carefully about the picture.

Complete the activities on the slide - these can be written or typed on a computer.





Question time!

- ▶ Can you think of adjectives to describe the doors?
- ▶ If you put your ear to a door, what noises could you hear coming from the other side?
- ▶ What noise would each door make if you opened it?
- ▶ What does each door tell you about who lives inside, and where they live? Look carefully for clues.
- ▶ Where does each door lead?

Maths

Complete the mental arithmetic activities below:

1. What is the missing number? 18 36 45 54
2. What is 1000 more than 150?
3. $4528 - 216 =$
4. $42 \div 6 =$
5. Two factors of 28 add up to 9. What are they?
6. $234 \times 5 =$
7. $23 \div 100 =$
8. $\frac{11}{9} - \frac{5}{9} =$
9. _____ = $1685 + 945$
10. $1.56 + 0.7 =$

1. What is the missing number? 7 14 28 35

2. What is 1000 more than 2900?

3. $3492 - 1768 =$

4. $72 \div 9 =$

5. Two factors of 36 add up to 21. What are they?

6. $216 \times 7 =$

7. $412 \div 10 =$

8. $\frac{3}{7} + \frac{2}{7} =$

9. _____ = $2458 + 1932$

10. $0.8 + 1.03 =$

Science

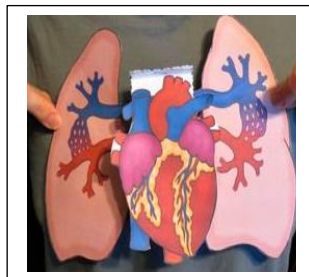
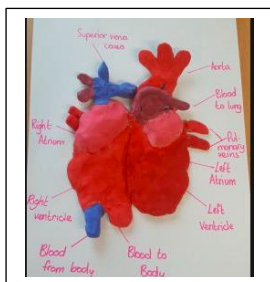
Watch the video on BBC Bitesize;

<https://www.bbc.co.uk/bitesize/topics/zwdr6yc/articles/ztg6gdm>

Once you have watched the video play the quiz to test your knowledge.

PRACTICAL TASK

Make a model of the human heart. How creative can you be? Below are some examples:



Other websites you may find useful;

- Free audio books <https://www.oxfordowl.co.uk/for-home/find-a-book/library-page/for-free-e-books>
- French learning www.linguascope.com Username: bowergrove Password: 20twenty
- A range of useful resources and learning opportunities www.twinkl.co.uk
- David Williams' free audio-books <https://www.worldofdavidwalliams.com/elevenses/>

- Free daily PE workouts at 9am with Joe Wicks (The Body Coach)
<https://www.youtube.com/thebodycoachtv> Click 'P.E. with Joe'.